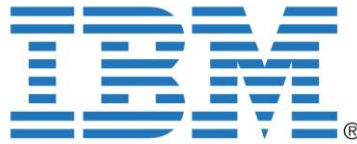




45th Annual Conference of the ORSNZ 2010

<https://secure.orsnz.org.nz/conf45/>

The Operations Research Society of New Zealand gratefully acknowledges the generous support of the following conference sponsors.



Principal Sponsor



Banquet Sponsor



Young Practitioner Prize Sponsor



Sponsor



The Energy Centre

Sponsor



Hoare Research Software Ltd

Sponsor



Department of Engineering Science

Sponsor

Operations Research Society of New Zealand (Inc.)
P.O. Box 6544, Wellesley Street, Auckland, New Zealand
<http://www.orsnz.org.nz>

Programme

Sunday 28 November

18:00–20:00 Informal Welcome and Registration

Old Government House, Corner of Princes St and Waterloo Quadrant, University of Auckland. All welcome.

Old Government House

Old Government House (1856), corner of Princes Street and Waterloo Quadrant, was the first mansion of its kind built in New Zealand. Classical in style with much of the timber façade cut to resemble stone, it was the seat of government until 1865 when the capital was moved to Wellington. For the next century it was Auckland's vice-regal residence. Royalty stayed there six times and the present Queen broadcast her Christmas speech to the Commonwealth from upstairs in 1953. Since being transferred to the University in 1969, the house has been the Staff Common Room Club. It contains a Council reception suite, flats for visiting academics, rooms for the Federation of Graduate Women and a lecture theatre.

Some of the trees in the grounds match Old Government House for antiquity. Two oaks at the north western corner were probably grown from acorns brought from the Great Forest at Windsor and the Royal Oak at Boscobel, Shropshire, where Charles II hid after the battle of Worcester in 1651. The big coral tree and the Norfolk pine at the southern edge of the lawn are said to have been planted by Sir George Grey during his second term as governor (1861-1867).

<http://www.auckland.ac.nz/uoa/home/for/business-employers-and-community/be-old-government-house>

Monday 29 November

08:15 Registration Opens

Clock Tower Colonnade, University of Auckland, 22 Princes St (see maps below)

08:45–10:30 Welcome and Young Practitioner Prize 1 (YPP1)

Session Chairs: Andrew Mason & Mike O'Sullivan

15 minute presentations

ClockTower 039

Dominic Fok

Maintenance Operation Centre Rostering Problem..... 1

Eduard Bulog

A Generic Nurse Rostering Algorithm for the INRC2010 Instances..... 8

Harriet Priddey[†] and Kane Harton

Comparing the Efficiency of Stores at New Zealand Post..... 18

Siamak Moradi

The Bi-Objective Multi-Commodity Minimum Cost Flow Problem..... 28

Anthony Downward

Risk Aversion and Retail Electricity Markets..... 39

Timothy Harton

Virtual Smelter Modelling for Metal Flow Management..... 50

11:00–12:30 Plenary Session

Session Chair: Andrew Mason

ClockTower 039

Tava Olsen (50 minutes)

Demand Management: Effective, Evil, or Just Everyday?..... 60

Chun Zhi Wu (40 minutes)	
<i>Achieve Smarter Decision Outcomes with Optimisation</i>	61
14:00–15:30 Young Practitioner Prize 2 (YPP2)	
<i>Session Chair: Cameron Walker</i>	
<i>15 minute presentations</i>	
<i>ClockTower 039</i>	
Min Gih Choi	
<i>Collateralised Debt Obligation Portfolio Optimisation</i>	62
Jason Undan	
<i>Optimisation of Demand-Side Bidding</i>	72
Lawrence Li	
<i>Aircraft Route Guidance Through Convective Weather</i>	82
Jason Drake	
<i>Design of Road Networks</i>	90
Simon Bull [†] and Denis Helm [†]	
<i>Bi-objective Cycle Route Finding</i>	100
Uttara Nataraj	
<i>Selecting a Portfolio of Cycling Projects</i>	110
16:00–17:15 Young Practitioner Prize 3 (YPP3)	
<i>Session Chair: Golbon Zakeri</i>	
<i>15 minute presentations</i>	
<i>ClockTower 039</i>	
Sebastian Ruther	
<i>A Multi-commodity Flow Formulation for the Integrated Aircraft Routing, Crew Pairing, and Tail Assignment Problem</i>	120
Thomas Liddle	
<i>Kick Strength and Online Sampling for Iterated Local Search</i>	130
Albert Ang [†] and Michael McIvor [†]	
<i>Optimal Public-Transport Transfer Synchronization Using Operational Tactics</i>	140
Oddo Zhang	
<i>Optimisation of Small-Scale Ambulance Move-Up</i>	150
Kane Harton	
<i>Scale Advantage - Using Data Envelopment Analysis to Detect Economies of Scale in the Insurance Industry</i>	160
17:30 ORSNZ AGM and Council Meeting	
<i>All Welcome</i>	
<i>ClockTower 039</i>	
19:30 Conference Banquet	
<i>Harbourside Restaurant: The Ferry Building, 99 Quay Street</i>	

Tuesday 30 November

08:50–10:10 Parallel Session 1A

Session Chair: Alastair McNaughton

20 minute presentations

ClockTower 039

Geoff Leyland

Rima: Building Math Models for Reuse 170

Andrew Mason[†] and Iain Dunning

OpenSolver -- Open Source Optimisation for Excel..... 181

Michael O’Sullivan,[†] Qi-Shan Lim, Cameron Walker and Stu Mitchell

Dippy -- A Simplified Interface to Advanced Integer Programming Techniques.. 191

Alastair McNaughton[†] and David Ryan

Constraint Branching Techniques 201

08:50–10:10 Parallel Session 1B

Session Chair: John Buchanan

ClockTower 029, 20 minute presentations

Christopher Arasanmi

A User's Critical Characteristic (UCC) in ERP System Training Transfer: An HRD Perspective..... 209

Luisa Mariele Strauss and Denis Borenstein[†]

Analyzing the Brazilian Higher Education System Using System Dynamics 210

Robert Y. Cavana

Scenario Modelling for Managers: A System Dynamics Approach 219

Stuart Dillon, John Buchanan,[†] Jim Corner

Comparing Public and Private Sector Decision Making: Problem Structuring and Information Quality Issues..... 229

10:40–11:20 Parallel Session 2A

Session Chair: David Ryan

20 minute presentations

ClockTower 039

David Ryan

The Container Positioning Problem Revisited Yet Again! 238

Samsul Islam,[†] Tiru Arthanari and Tava Olsen

Empty Container-truck Movement Problem At Ports of Auckland..... 239

10:40–11:20 Parallel Session 2B

Session Chair: Matthias Ehrgott

20 minute presentations

ClockTower 029

Divya Jain[†] and K.K. Aggarwal

Optimal Ordering Policy With Inspection Errors and Learning Curve Consideration on Imperfect Quality Items..... 249

Sherry Hsu, Matthias Ehrgott [†] and Piaras Kelly <i>Optimisation of Mould Filling Parameters of the Compression Resin Transfer Moulding Process</i>	259
--	-----

11:20–12:30 Plenary Session

Session Chair: David Ryan

ClockTower 039

Mike Hewitt, George Nemhauser, Martin Savelsbergh [†] and Jin-Hwa Song (50 minutes) <i>Branch-and-Price Guided Search</i>	270
Anver Sheha (20 minutes) <i>Operations Research Opportunities at Fonterra</i>	-

14:00–15:40 Parallel Session 3A

Session Chair: Hamish Waterer

20 minute presentations

ClockTower 039

Cameron Walker, [†] M.J. O'Sullivan, Y. Zhu, S. Hsu, M. L. MacKenzie, C. R. Donovan and V. Rajagopal <i>Regression Spline Fitting with Applications</i>	271
Felipe Lillo [†] and Frederik Schmidt <i>Optimal Paths in Real Multimodal Transportation Networks: An Appraisal Using GIS Data from New Zealand and Europe</i>	281
Yuval Hadas [†] and Amir Laor <i>Network Design Model with Evacuation Constraints</i>	290
Kenneth Kuhn [†] and Andrea Raith <i>Biobjective Air Traffic Flow Management</i>	299
Natasha Boland, Hamish Waterer [†] and Martin Savelsbergh <i>Shipping Stem Generation for the Hunter Valley Coal Chain</i>	309

14:00–15:40 Parallel Session 3B

Session Chair: Nicola Petty

20 minute presentations

ClockTower 029

Andrea Raith <i>Speed-up of Labelling Algorithms for Biobjective Shortest Path Problems</i>	313
Yupei Xiong, Damon Gulczynski, [†] Bruce Golden, Daniel Kleitman and Edward Wasil <i>Worst-Case Analysis for the Split Delivery Vehicle Routing Problem with Minimum Delivery Amounts</i>	323
Laleh Haerian Ardekani, Tiru S. Arthanari [†] and Matthias Ehrgott <i>Performance of the Branch and Bound Algorithm on the Multistage Insertion Formulation of the Travelling Salesman Problem</i>	326
Shane Dye, [†] John Giffin, Nicola Petty <i>A Subset-Selection Prize-Collecting TSP with Uncertain Speed</i>	336
Nicola Petty [†] and Shane Dye <i>Determining Degree of Difficulty in ROGO, a TSP-based Paper Puzzle</i>	345

16:10–17:50 Parallel Session 4A

Session Chair: Mark Johnston

20 minute presentations

ClockTower 039

Yuval Hadas, Matan Shnaiderman [†] and Avishai (Avi) Ceder <i>Public-Transit Frequency Setting Using Minimum-Cost Approach with Stochastic Demand</i>	353
Matthew Baxter, [†] Mark Brown and Heng-Soon Gan <i>A Decision Support Tool for Equipment Replacement in Forestry Harvesting Operations</i>	363
Natashia Boland, Thomas Kalinowski, [†] Hamish Waterer and Lanbo Zheng <i>Maintenance Scheduling for the Hunter Valley Coal Chain</i>	373
Ross James [†] and Bernardo Almada-Lobo <i>Mathematical Programming-based Heuristics for Production Planning</i>	376
Mark Johnston [†] and Mike Wright <i>Scheduling Super Rugby</i>	386

16:10–17:30 Parallel Session 4B

Session Chair: John F Raffensperger

20 minute presentations

ClockTower 029

Guillermo Gallego and Masoud Talebian [†] <i>Demand Learning and Dynamic Pricing for Multi-Version Products</i>	396
Golbon Zakeri [†] and Anthony Downward <i>Financial Transmission Rights Auctions: Entry and Efficiency</i>	400
Stephen Starkey, [†] E.G. Read, S. Dye and B.J. Ring <i>A Natural Gas LP Formulation to Enhance Allocation with Market Pricing Mechanisms</i>	409
John F. Raffensperger <i>Outline of a Market for Ecological Connectivity</i>	418

[†] Presenting author

Location & Maps

Clock Tower lecture rooms 029 and 039 22 Princes Street, University of Auckland

Enter from Princes Street as shown below.

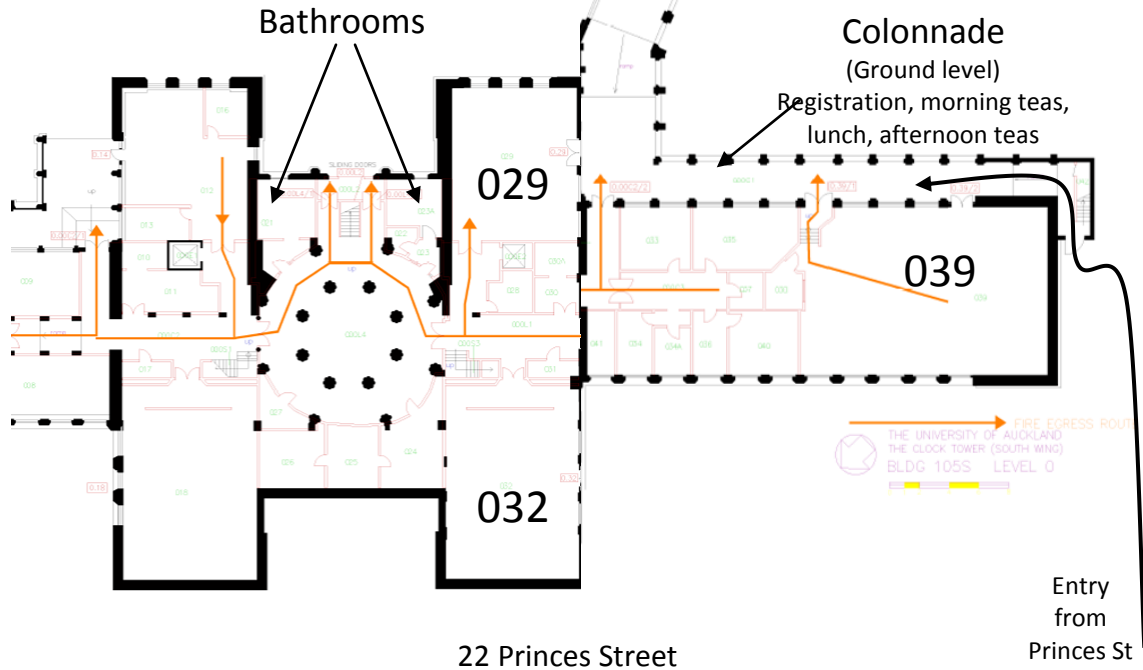
Orange/grey arrows show fire exits.

Room 039: Plenaries & session talks

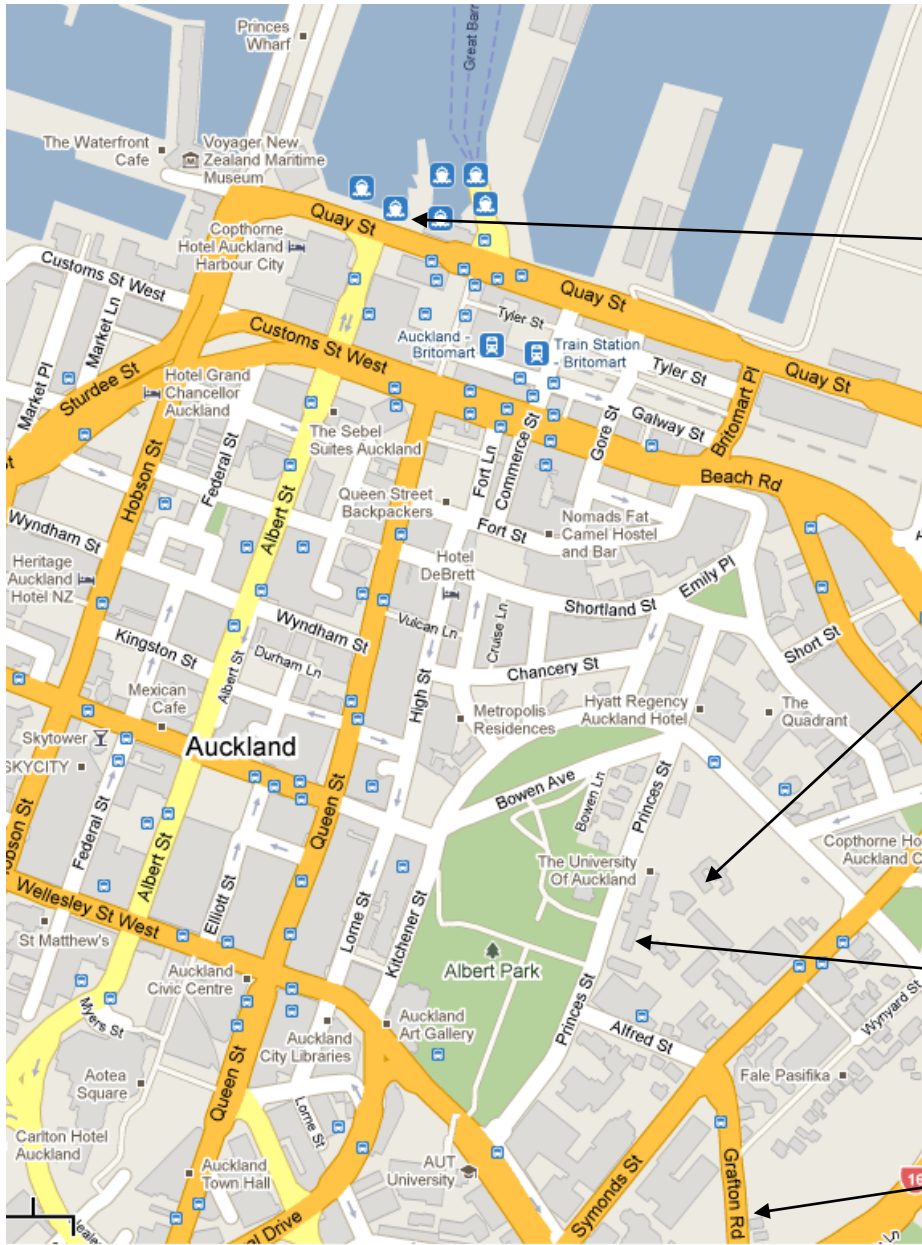
Room 029: Session talks

Room 032: Presenter preparation room

All rooms are entered via the colonnade



Map of Auckland CBD showing Key Conference Locations



Banquet
Mon 730pm
*Harbourside
Restaurant
Ferry Building
99 Quay St*

**Reception &
Registration**
Sun 6pm
*Old Government
House
Corner Princes St,
Waterloo Quadrant*

**Registration &
Presentations**
*Clock Tower
Ground Floor
(Level 0)
Rooms 029 & 039
22 Princes St
University of
Auckland*

Parking
*Owen G Glen
Building
Grafton Road*

Map courtesy Google.com

